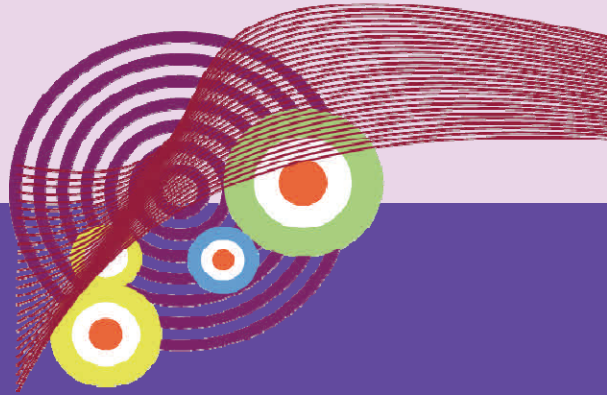


Connect e-Campus

Summer 2012 Newsletter



► Contact the Help Desk

Email: connect@lsc.edu

Phone: 218-733-1016 or 1-800-432-2884 ext. 1016

Hours: <http://explore.lsc.edu/tsc>

► When can I start my Summer Session online course?

Your Summer Session online course begins on Wednesday, May 30 and ends July 26, 2012. You will be able to log into the *e-Campus* prior to the first day of class and we encourage you to do so. Your course(s) may not appear and you will not be able to access it until the first day of class.

► Online Class Login Instructions

1. **Lookup your LSCnet account information.** *This must be done to access your class.* Go to www.lsc.edu and click on Student Portal>Lookup Your LSCnet Account. After you enter your e-Services login information (Student ID and Password), you will obtain your username and password that you will use to login to email and the e-Campus.

What if I don't know or remember my Student ID or Password?

You may look up your Student ID or reset your Password by going to www.lsc.edu and click on Student Portal>e-Services>Need Login Help?

For assistance, call the Help Desk at (218) 733-1016 or 1-800-432-2884 ext. 1016.

2. **Login to your email account.** Go to www.lsc.edu and click on Student Portal>Email.

3. **Login to the e-Campus.** Go to www.lsc.edu and click on Student Portal>e-Campus.

4. **View the Online Student Orientation video.** Go to www.lsc.edu and click on Student Portal. The video is under *Announcements* on right side of the page.

5. **Become familiar with the e-Campus by using the LSC Online Skills tutorial.** You may need to click on the double arrow icon to the right of *Student Resources* to see the course.

* Free Workshop *

Bring your login information

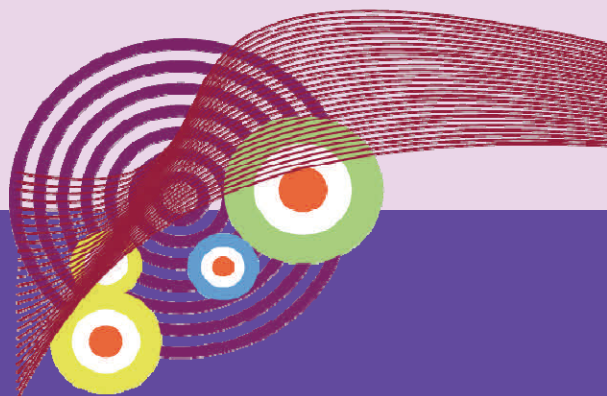
Room S2950
Wednesday, May 30
12:30-1:30p.m.

or
Thursday, May 31
8:30-9:30 a.m.

Or
Online
Student Portal

Connect e-Campus

Summer 2012 Newsletter



► Contact the Help Desk

Email: connect@lsc.edu

Phone: 218-733-1016 or 1-800-432-2884 ext. 1016

Hours: <http://explore.lsc.edu/tsc>

► When can I start my Summer Session online course?

Your Summer Session online course begins on Wednesday, May 30 and ends July 26, 2012. You will be able to log into the *e-Campus* prior to the first day of class and we encourage you to do so. Your course(s) may not appear and you will not be able to access it until the first day of class.

► Online Class Login Instructions

1. **Lookup your LSCnet account information.** *This must be done to access your class.* Go to www.lsc.edu and click on Student Portal>Lookup Your LSCnet Account. After you enter your e-Services login information (Student ID and Password), you will obtain your username and password that you will use to login to email and the e-Campus.

What if I don't know or remember my Student ID or Password?

You may look up your Student ID or reset your Password by going to www.lsc.edu and click on Student Portal>e-Services>Need Login Help?

For assistance, call the Help Desk at (218) 733-1016 or 1-800-432-2884 ext. 1016.

2. **Login to your email account.** Go to www.lsc.edu and click on Student Portal>Email.

3. **Login to the e-Campus.** Go to www.lsc.edu and click on Student Portal>e-Campus.

4. **View the Online Student Orientation video.** Go to www.lsc.edu and click on Student Portal. The video is under *Announcements* on right side of the page.

5. **Become familiar with the e-Campus by using the LSC Online Skills tutorial.** You may need to click on the double arrow icon to the right of *Student Resources* to see the course.

* Free Workshop *

Bring your login information

Room S2950
Wednesday, May 30
12:30-1:30p.m.

or
Thursday, May 31
8:30-9:30 a.m.

Or
Online
Student Portal

► Services and Policies

Free online tutoring from SMARTHINKING:
<https://www.lsc.edu/e-Campus/smarthinking/>

Technology requirements and downloads:
<https://www.lsc.edu/e-campus/Technology>

Student Services Center:
<http://explore.lsc.edu/studentsservices>
218-733-7601 or 800-432-2884 ext. 7601

Textbook Information:
<http://store.lsc.edu>
218-279-2693 or 800-432-2884 ext. 2693

Policies:
<http://explore.lsc.edu/policies/default.aspx>
Non-Attendance - 3.17.4
Student Conduct - 3.6
Email Accounts - 5.2

► Important Reminder

Add/Drop: Students may add and/or drop a class through the fifth (5th) academic calendar day of the term. Students will not be obligated for tuition and certain fees for courses dropped within the above specified time frame. (See Subpart B for classes that do not run the entire length of the semester.) Students who drop within the above guidelines shall not have such courses appear on their transcripts.

Withdraw: Students may withdraw from a course(s) beginning on the sixth (6th) academic calendar day of the term through the scheduled end date for that course(s). Students who have accessed the final exam forfeit their right to withdraw. A grade of "W" will appear on the transcript.

Add/drop/withdrawals must be officially entered into Lake Superior College e-Services. Go to: www.lsc.edu and click on Student Portal>e-Services

This document can be made available in alternative formats by calling 218-733-7650 or 800-627-3529 MRS/TTY.

► Services and Policies

Free online tutoring from SMARTHINKING:
<https://www.lsc.edu/e-Campus/smarthinking/>

Technology requirements and downloads:
<https://www.lsc.edu/e-campus/Technology>

Student Services Center:
<http://explore.lsc.edu/studentsservices>
218-733-7601 or 800-432-2884 ext. 7601

Textbook Information:
<http://store.lsc.edu>
218-279-2693 or 800-432-2884 ext. 2693

Policies:
<http://explore.lsc.edu/policies/default.aspx>
Non-Attendance - 3.17.4
Student Conduct - 3.6
Email Accounts - 5.2

► Important Reminder

Add/Drop: Students may add and/or drop a class through the fifth (5th) academic calendar day of the term. Students will not be obligated for tuition and certain fees for courses dropped within the above specified time frame. (See Subpart B for classes that do not run the entire length of the semester.) Students who drop within the above guidelines shall not have such courses appear on their transcripts.

Withdraw: Students may withdraw from a course(s) beginning on the sixth (6th) academic calendar day of the term through the scheduled end date for that course(s). Students who have accessed the final exam forfeit their right to withdraw. A grade of "W" will appear on the transcript.

Add/drop/withdrawals must be officially entered into Lake Superior College e-Services. Go to: www.lsc.edu and click on Student Portal>e-Services

This document can be made available in alternative formats by calling 218-733-7650 or 800-627-3529 MRS/TTY.



2101 Trinity Rd.
Duluth, MN 55811



2101 Trinity Rd.
Duluth, MN 55811